



Model 5100 Bootloader Installation Guide

The information in this document is current as of the following Hardware and Firmware revision levels. Some features may not be supported in earlier revisions. See www.ctc-control.com for the availability of firmware updates or contact CTC Technical Support.

Model Number	Hardware Revision	Firmware Revision
5101/5102/5103/5104	B, C, and E	4.05



WARNING: Use of CTC Controllers and software is to be done only by experienced and qualified personnel who are responsible for the application and use of control equipment like the CTC controllers. These individuals must satisfy themselves that all necessary steps have been taken to assure that each application and use meets all performance and safety requirements, including any applicable laws, regulations, codes and/or standards. The information in this document is given as a general guide and all examples are for illustrative purposes only and are not intended for use in the actual application of CTC product. CTC products are not designed, sold, or marketed for use in any particular application or installation; this responsibility resides solely with the user. CTC does not assume any responsibility or liability, intellectual or otherwise for the use of CTC products.

The information in this document is subject to change without notice. The software described in this document is provided under license agreement and may be used and copied only in accordance with the terms of the license agreement. The information, drawings, and illustrations contained herein are the property of Control Technology Corporation. No part of this manual may be reproduced or distributed by any means, electronic or mechanical, for any purpose other than the purchaser's personal use, without the express written consent of Control Technology Corporation.

TABLE OF CONTENTS

1.0 Overview.....	5
1.1 Firmware Distribution.....	5
2.0 Installation Procedure	5
2.1 Invoking Program	5
2.2 Starting Download	11
2.3 Completion.....	13

Blank Page

1.0 Overview

NOTE: *This manual is only required if a controller will not powerup and FTP connections can not be made! The bootloader can always be replaced using FTP if the controller is operating normally.*

Should a problem ever occur during the reflash operation of the controller it may be necessary to fully replace all Monitor/Bootloader and Quickstep firmware as is done initially at the factory. This could occur if power is cycled during a reflash operation. When this occurs the program flash chip is fully erased and only partially updated. Although this should never occur, it is Murphy's Law that power may be lost during re-flashing, hence this manual. This manual will direct you as to how to initially load a Monitor/Bootloader and Quickstep firmware.

1.1 Firmware Distribution

The files for updating a controller, both monitor and main board Quickstep firmware are distributed in a zip file called 5100FullInstall.zip. To install this create a vbload subdirectory on one of your hard disks and extract this file to that location. The following files will be present:

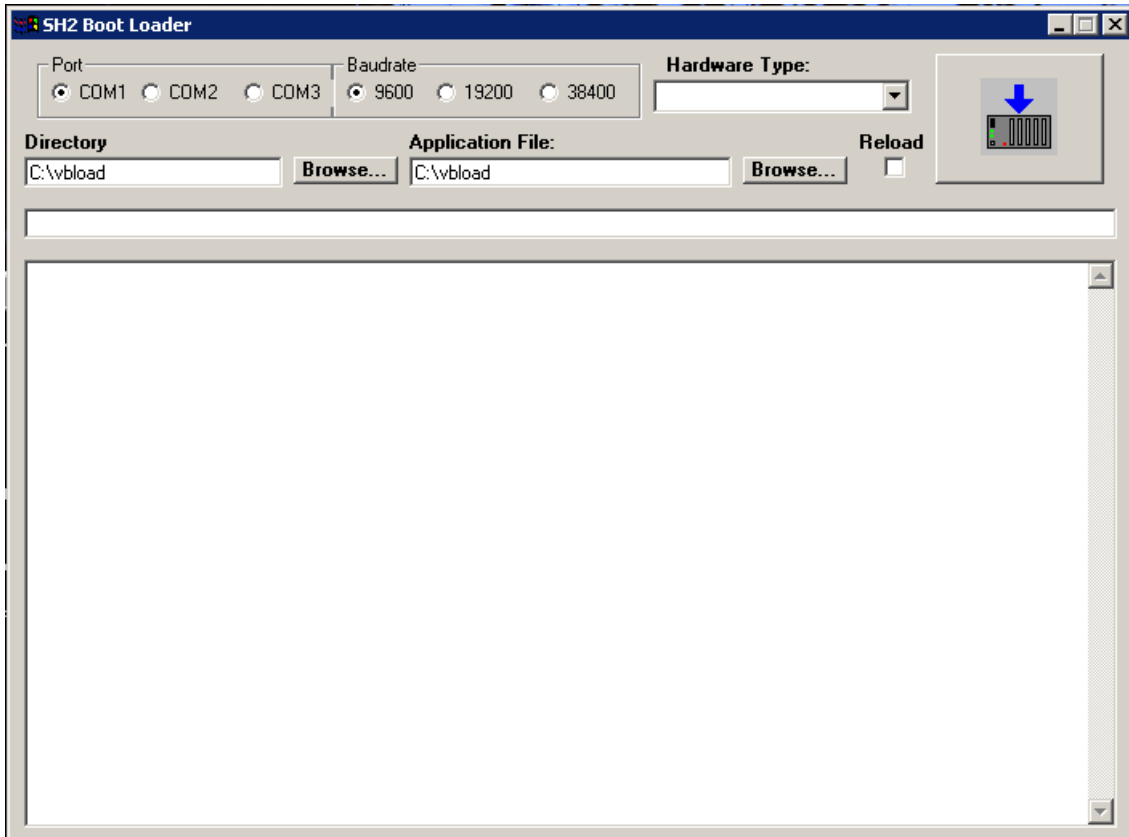
Sh2boot.exe	vbload program, to install bootloader in controller
5102.mon	Monitor/Bootloader firmware for internal CPU loading
5102.sub	Type file for vbload program
BF5100#####.sr1	Quickstep firmware for CPU and external flash where ##### is the revision number. LAN5102.sr1 may be used instead if present. This is the same type of file, its name simply does not include revision information.

Note: CTCMON V2.8 must be installed on the computer for proper operation. It's communications DLL is required.

2.0 Installation Procedure

2.1 Invoking Program

At a DOS prompt or if a shortcut was made, invoke the sh2boot.exe program. The following will appear:



On the controller, turn the unit off and move the W1 jumper to PROC position, pin closest to the communications connectors should now be vacant. Power the unit up and the POWER LED should be lit and FAULT LED dim. Make sure COM1 of the controller is connected to the serial port on your PC.

Before (normal operation):



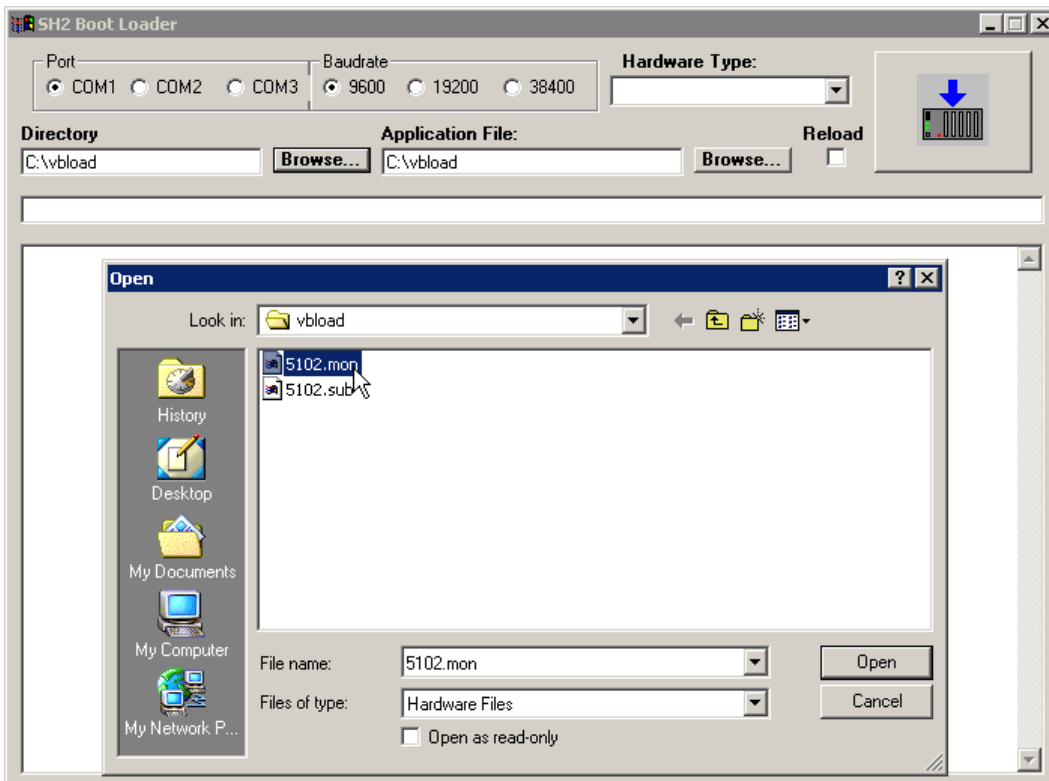
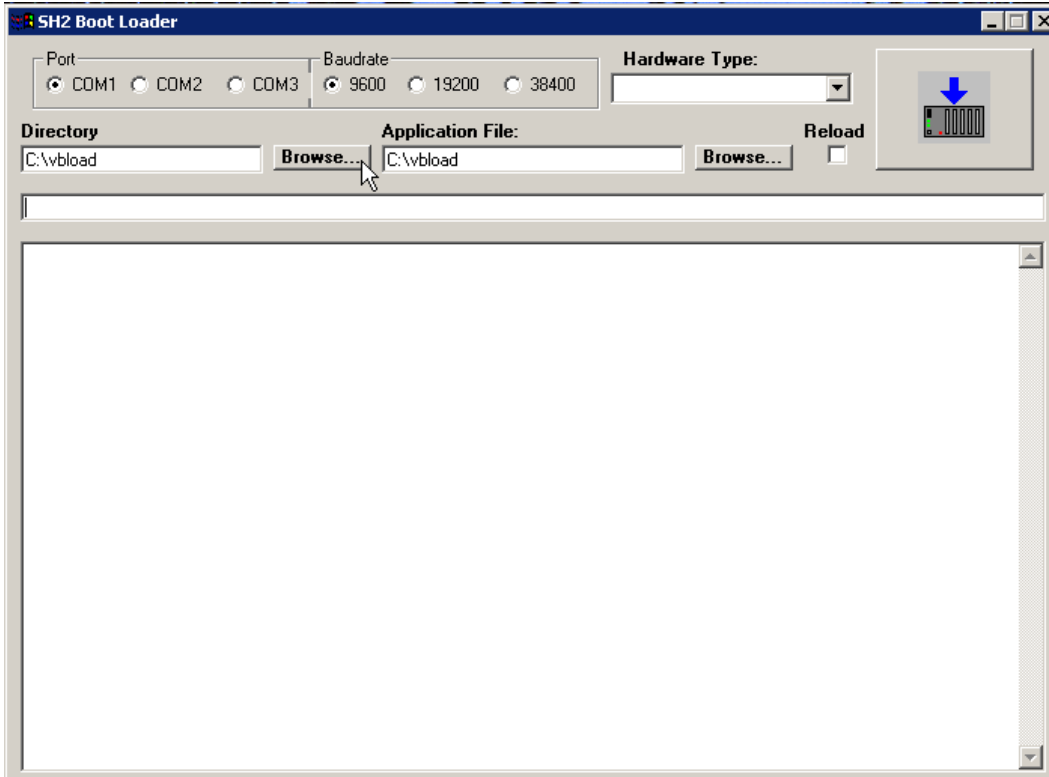
After (PROC position, loading bootloader):



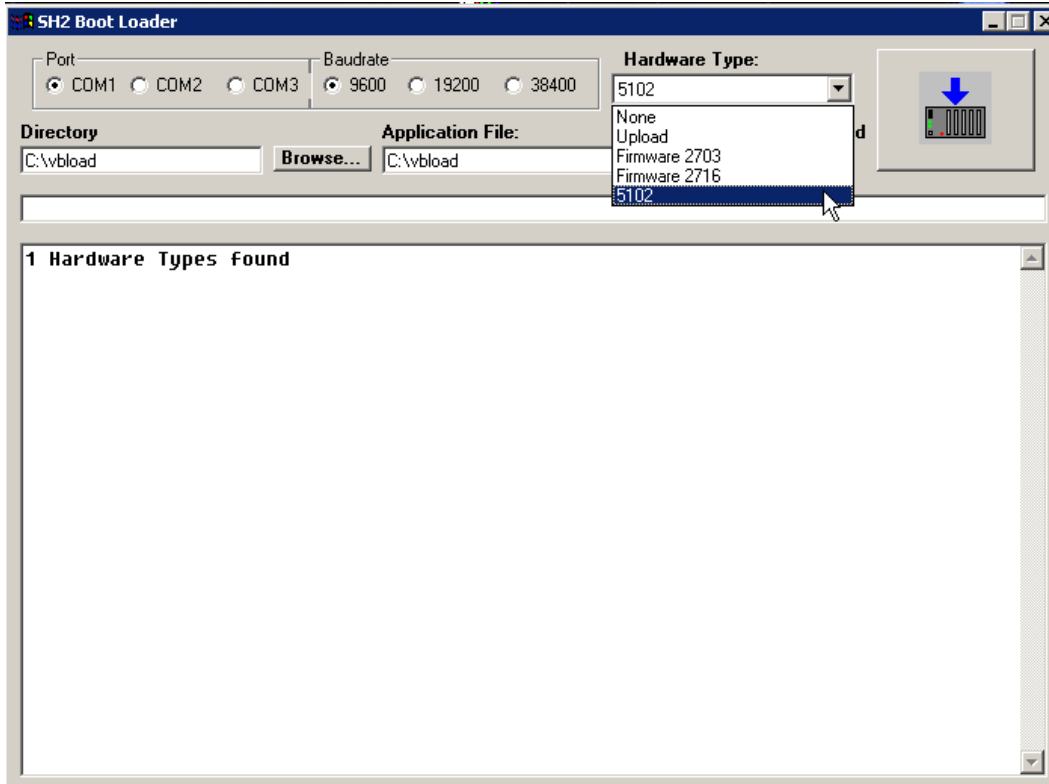
It is important to do the following in sequence otherwise the application file will not load properly. The full update will take about 15 minutes:

1. Using the Directory Browse button, select the 5102.mon file.

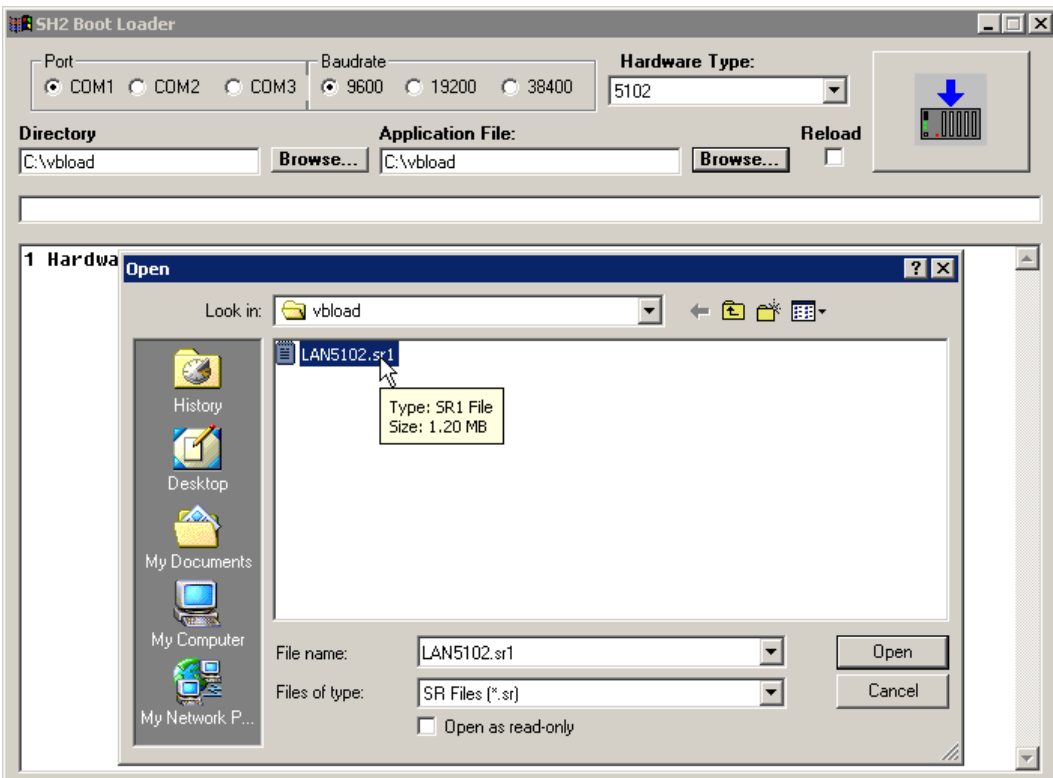
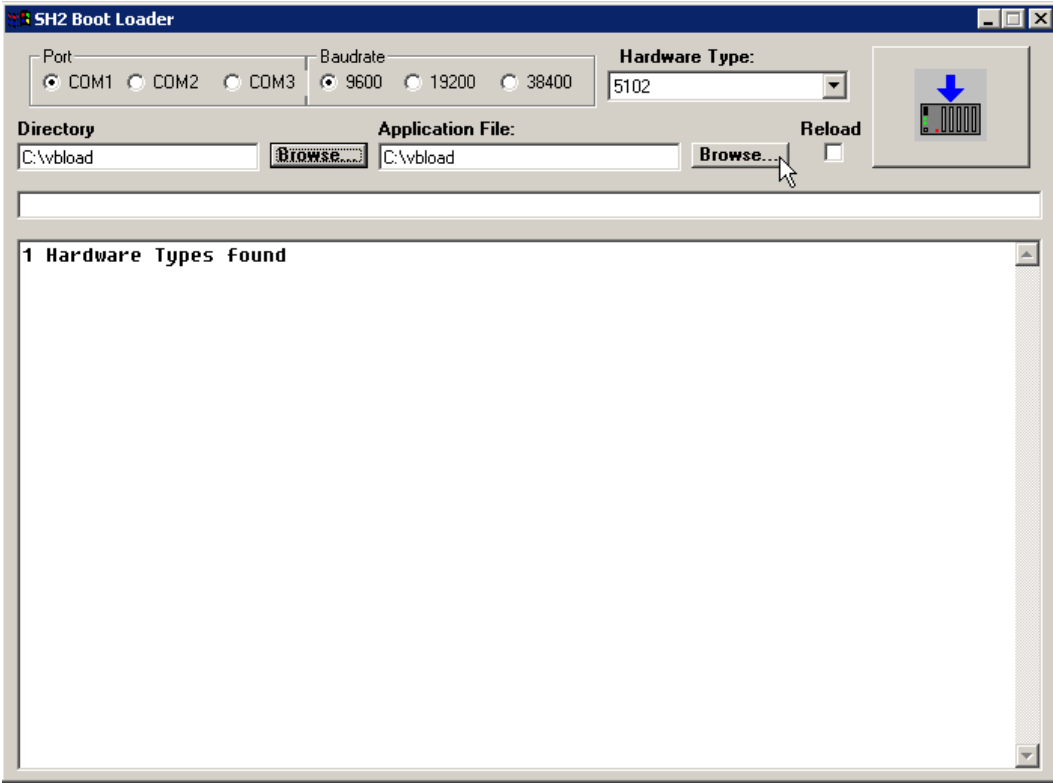
Model 5100 Bootloader Installation Guide



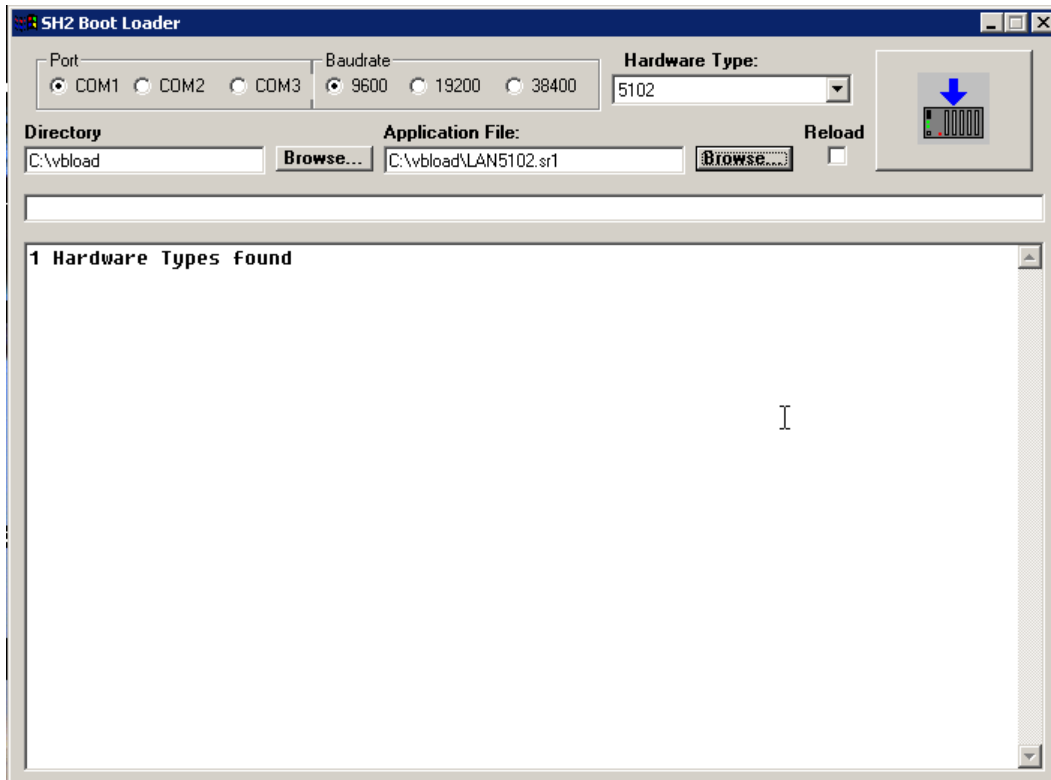
2. Select the “Hardware Type” to be 5102, if not already set.



3. Select the “Application File” LAN5102.sr1 or BF5100#####.sr1 (where ##### is the revision level of the firmware) using the Application file Browse button.

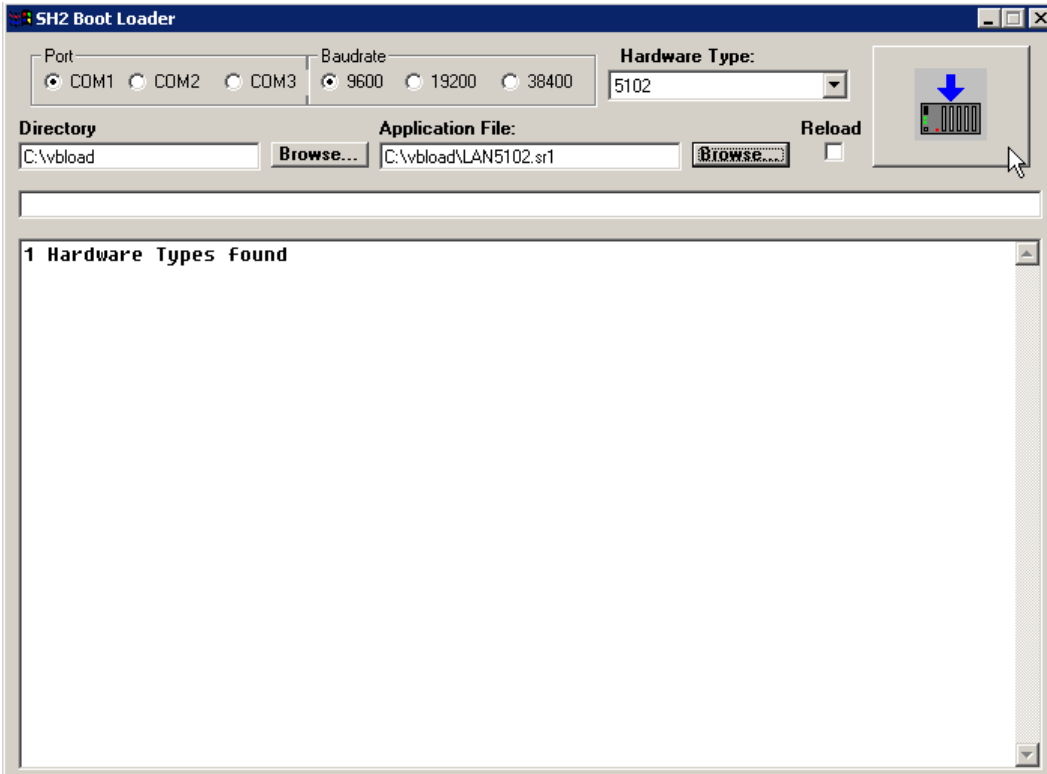


Model 5100 Bootloader Installation Guide

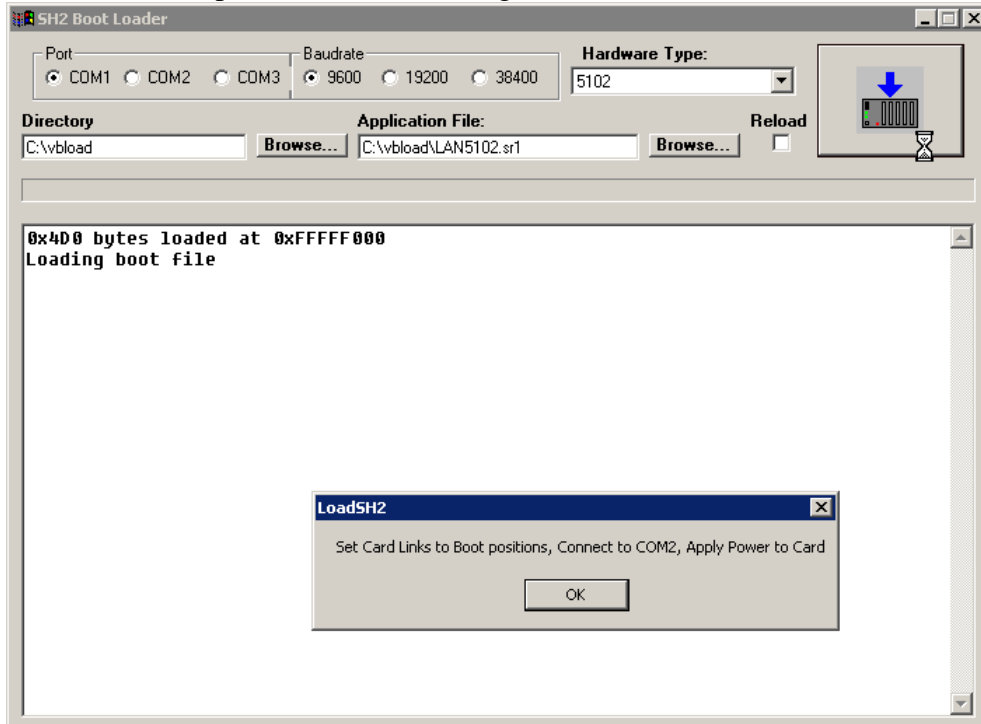


2.2 Starting Download

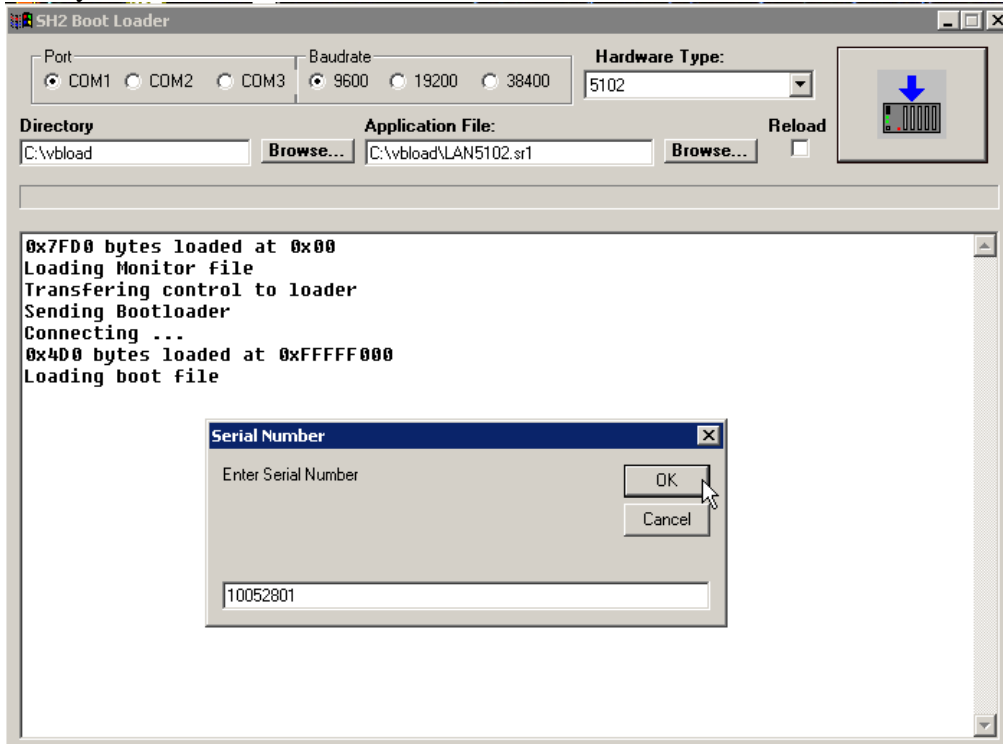
With the controller powered on press the big button with the blue down arrow:



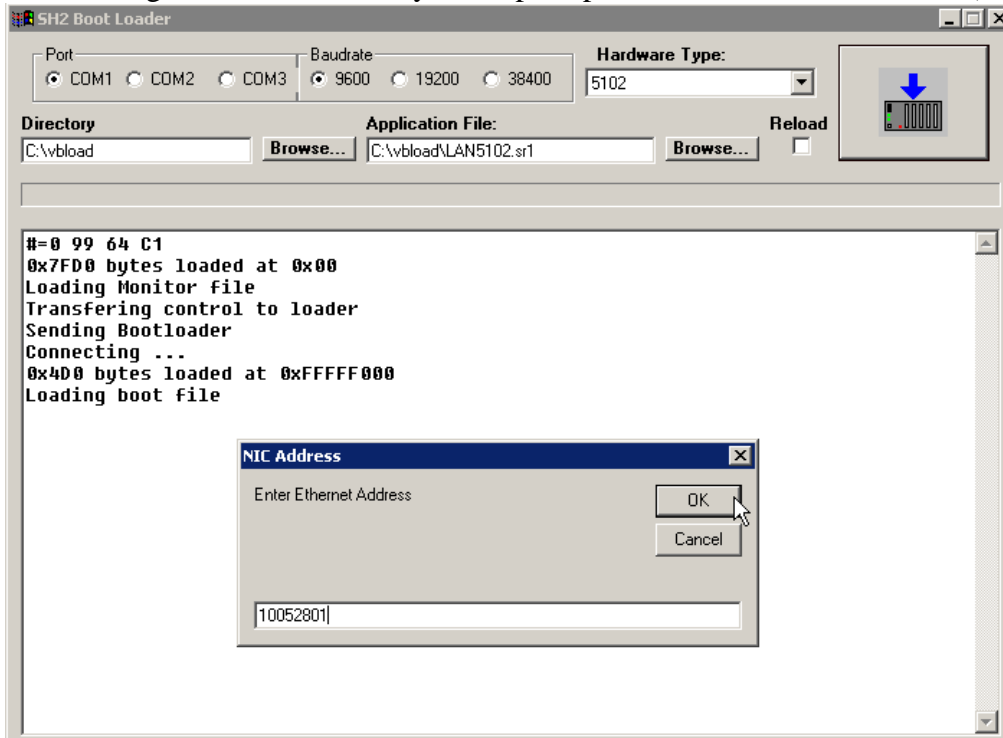
To initiate the transfer press the OK button, ignore the comment about COM2.



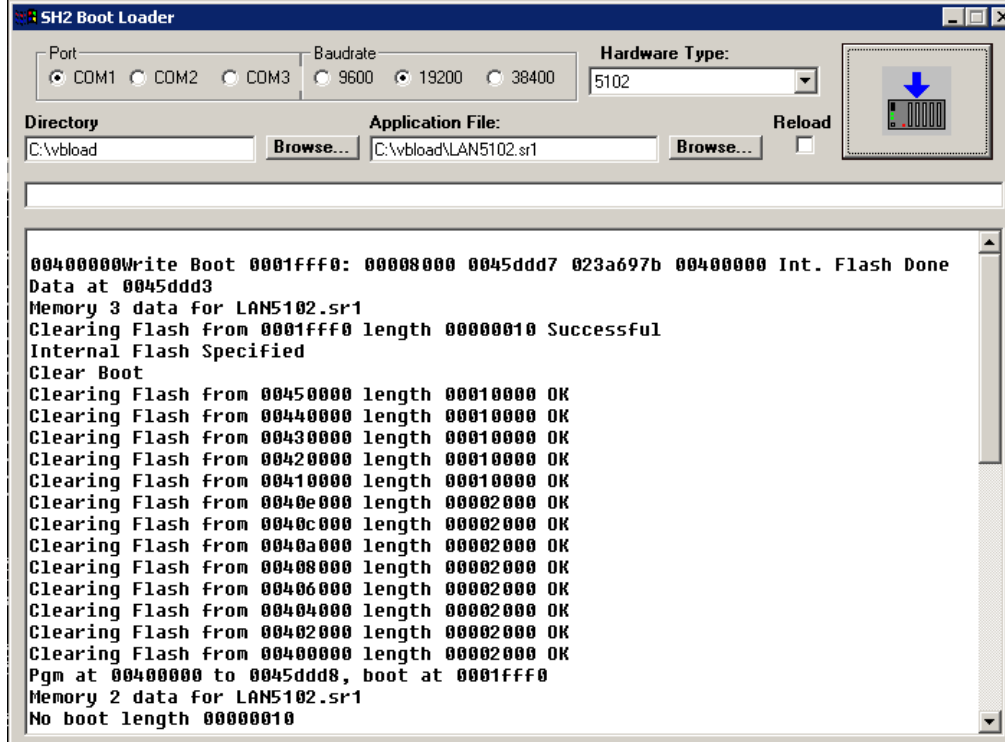
After initial loading a prompt for Serial number and Ethernet Address will appear. The Ethernet Address is really the MAC Address. Use the serial number from the bar-coded label on the main board. It will appear something like SN100-52801, use the numeric portion only:



After entering the Serial Number you are prompted for the Ethernet Address (MAC):



The monitor will initially load, execute and then the application is loaded, taking about 15 minutes. When finished the following will appear. Although the controller is now operational, please move the jumper back to the original position (W1-run) and cycle power.



2.3 Completion

Using the serial port and CTCMON, the IP address information will have to be re-entered if DHCP is not being used (registers 20048... remember to write a 1 to the 20096 register for changes to take effect), cycle power once again. Now update the communications processor and any analog or motion modules with their proper firmware, via ftp and telnet if required. Detailed instructions for this may be found in the *Model 5100 Remote Administration Guide (Document 951-510001)*.